



Certificate of Analysis

CANNABUSINESS LABORATORIES, LLC

Customer:

Acela Biomedical LLC
700 Brush Creek Rd
Manchester, OH 45144

Received Date **3/7/2024**
COA Released **3/11/2024**

Comments

Sample ID **240307004**
Order Number **CB240307003**
Sample Name **Muscle & Joint Balm**

External Sample ID

Batch Number **20240**

Product Type **Topical**
Sample Type **Topical**

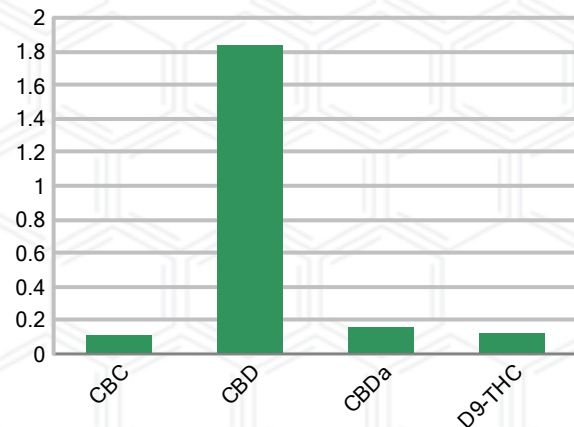
CANNABINOID PROFILE

Analyte	LOQ (%)	% Weight	mg/g
CBC	0.01	0.110	1.097
CBD	0.01	1.835	18.35
CBDa	0.01	0.155	1.547
CBDV	0.01	ND	ND
CBG	0.01	ND	ND
CBGa	0.01	ND	ND
CBN	0.01	ND	ND
d8-THC	0.01	ND	ND
d9-THC	0.01	0.120	1.198
THCa	0.01	ND	ND
Total Cannabinoids		2.220	22.20
Total Potential THC		0.120	1.198
Total Potential CBD		1.971	19.71
Total Potential CBG		N/A	N/A
Ratio of Total Potential CBD to Total Potential THC			16.43 : 1
Ratio of Total Potential CBG to Total Potential THC			N/A

SAMPLE IMAGE



CANNABINOIDS % Weight



*Total Cannabinoids refers to the sum of all cannabinoids detected.

*Total Potential CBD = (0.877 x CBDa) + CBD. *Total Potential THC = (0.877 x THCa) + THC. *Total Potential CBG = (0.877 x CBGa) + CBG.

*Total Potential THC/CBD are calculated to take into account the loss of an acid group during decarboxylation.



J. Hobgood
Laboratory Manager

SIGNATURE

Jamie Hobgood

LABORATORY MANAGER

03/11/2024 4:59 PM

DATE

This product has been tested by CannaBusiness Laboratories using validated testing methodologies and a quality system. Values reported relate only to the product tested. CannaBusiness Laboratories makes no claims as to the efficacy, safety, or other risks associated with any detected or non-detected levels of any compounds reported herein. This Certificate shall not be reproduced except in full, without the written permission of CannaBusiness Laboratories. Photo is of sample received by the lab and may vary from final packaging. The results apply to the sample as received.





Certificate of Analysis

CANNABUSINESS LABORATORIES, LLC

Customer

Acela Biomedical LLC
700 Brush Creek Rd
Manchester, OH 45144



Sample Name: Muscle & Joint Balm

Sample ID: 240307004

Order Number: CB240307003

Product Type: Topical

Sample Type: Topical

Received Date: 03/07/2024

Batch Number: 20240

COA released: 03/11/2024 4:59 PM

Potency (mg/g)

Date Tested: 03/08/2024

Method: CB-SOP-028

Instrument:

0.120 %	1.971 %	2.220 %	22.20 mg/g
Total THC	Total CBD	Total Cannabinoids	Total Cannabinoids

Analyte	Result	Units	LOQ	Result	Units
CBC (Cannabichromene)	0.110	%	0.010	1.097	mg/g
CBD (Cannabidiol)	1.835	%	0.010	18.35	mg/g
CBDa (Cannabidiolic Acid)	0.155	%	0.010	1.547	mg/g
CBDV (Cannabidivarin)	ND	%	0.010	ND	mg/g
CBG (Cannabigerol)	ND	%	0.010	ND	mg/g
CBGa (Cannabigerolic Acid)	ND	%	0.010	ND	mg/g
CBN (Cannabinol)	ND	%	0.010	ND	mg/g
D8-THC (D8-Tetrahydrocannabinol)	ND	%	0.010	ND	mg/g
D9-THC (D9-Tetrahydrocannabinol)	0.120	%	0.010	1.198	mg/g
THCa (Tetrahydrocannabinolic Acid)	ND	%	0.010	ND	mg/g



J. Hobgood
Laboratory Manager

SIGNATURE

Jamie Hobgood

03/11/2024 4:59 PM

DATE

NT = Not tested, ND = Not detected; LOQ = Limit of Quantitation; <LOQ = Detected; >ULOL = Above upper limit of linearity; CFU/g = Colony forming units per 1 gram; TNTC = Too numerous to count

This product has been tested by CannaBusiness Laboratories using validated testing methodologies and a quality system. Values reported relate only to the product tested. CannaBusiness Laboratories makes no claims as to the efficacy, safety, or other risks associated with any detected or non-detected levels of any compounds reported herein. This Certificate shall not be reproduced except in full, without the written permission of CannaBusiness Laboratories. Photo is of sample received by the lab and may vary from final packaging. The results apply to the sample as received.