



Certificate of Analysis

CANNABUSINESS LABORATORIES, LLC

Customer:

Acela Biomedical LLC
700 Brush Creek Rd
Manchester, OH 45144

Sample ID **240125015**
Order Number **CB240125004**
Sample Name **500mg Tincture**

Received Date **1/25/2024**
COA Released **1/30/2024**

External Sample ID
Batch Number **012224**

Comments

Product Type **Other**
Sample Type **Other**

CANNABINOID PROFILE

Analyte	LOQ (%)	% Weight	mg/g
CBC	0.01	0.078	0.783
CBD	0.01	1.958	19.58
CBDa	0.01	0.117	1.168
CBDV	0.01	ND	ND
CBG	0.01	0.018	0.179
CBGa	0.01	ND	ND
CBN	0.01	ND	ND
d8-THC	0.01	ND	ND
d9-THC	0.01	0.057	0.573
THCa	0.01	ND	ND
Total Cannabinoids		2.229	22.29
Total Potential THC		0.057	0.573
Total Potential CBD		2.061	20.61
Total Potential CBG		0.018	0.179

Ratio of Total Potential CBD to Total Potential THC **36.16 : 1**

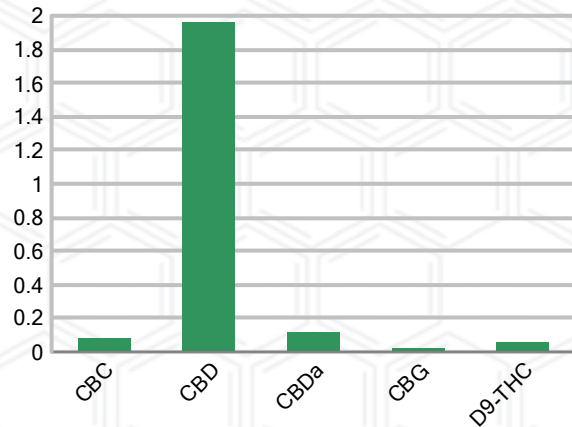
Ratio of Total Potential CBG to Total Potential THC **0.32 : 1**

**Total Cannabinoids refers to the sum of all cannabinoids detected.
*Total Potential CBD = (0.877 x CBDa) + CBD. *Total Potential THC = (0.877 x THCa) + THC. *Total Potential CBG = (0.877 x CBGa) + CBG.
Total Potential THC/CBD are calculated to take into account the loss of an acid group during decarboxylation.

SAMPLE IMAGE



CANNABINOIDS % Weight



J. Hobgood
Laboratory Manager
SIGNATURE

Jamie Hobgood
LABORATORY MANAGER

01/30/2024 9:13 AM
DATE

This product has been tested by CannaBusiness Laboratories using validated testing methodologies and a quality system. Values reported relate only to the product tested. CannaBusiness Laboratories makes no claims as to the efficacy, safety, or other risks associated with any detected or non-detected levels of any compounds reported herein. This Certificate shall not be reproduced except in full, without the written permission of CannaBusiness Laboratories. Photo is of sample received by the lab and may vary from final packaging. The results apply to the sample as received.





Certificate of Analysis

CANNABUSINESS LABORATORIES, LLC

Customer

Acela Biomedical LLC
700 Brush Creek Rd
Manchester, OH 45144



Sample Name: 500mg Tincture

Sample ID: 240125015

Order Number: CB240125004

Product Type: Other

Sample Type: Other

Received Date: 01/25/2024

Batch Number: 012224

COA released: 01/30/2024 9:13 AM

Potency (mg/g)			
Date Tested: 01/29/2024		Method: CB-SOP-028	
Instrument:			
0.057 %	2.061 %	2.229 %	22.29 mg/g
Total THC	Total CBD	Total Cannabinoids	Total Cannabinoids

Analyte	Result	Units	LOQ	Result	Units
CBC (Cannabichromene)	0.078	%	0.010	0.783	mg/g
CBD (Cannabidiol)	1.958	%	0.010	19.58	mg/g
CBDa (Cannabidiolic Acid)	0.117	%	0.010	1.168	mg/g
CBDV (Cannabidivarin)	ND	%	0.010	ND	mg/g
CBG (Cannabigerol)	0.018	%	0.010	0.179	mg/g
CBGa (Cannabigerolic Acid)	ND	%	0.010	ND	mg/g
CBN (Cannabinol)	ND	%	0.010	ND	mg/g
D8-THC (D8-Tetrahydrocannabinol)	ND	%	0.010	ND	mg/g
D9-THC (D9-Tetrahydrocannabinol)	0.057	%	0.010	0.573	mg/g
THCa (Tetrahydrocannabinolic Acid)	ND	%	0.010	ND	mg/g



J. Hobgood
Laboratory Manager

Jamie Hobgood

01/30/2024 9:13 AM

SIGNATURE

DATE

NT = Not tested, ND = Not detected; LOQ = Limit of Quantitation; <LOQ = Detected; >ULOL = Above upper limit of linearity; CFU/g = Colony forming units per 1 gram; TNTC = Too numerous to count

This product has been tested by CannaBusiness Laboratories using validated testing methodologies and a quality system. Values reported relate only to the product tested. CannaBusiness Laboratories makes no claims as to the efficacy, safety, or other risks associated with any detected or non-detected levels of any compounds reported herein. This Certificate shall not be reproduced except in full, without the written permission of CannaBusiness Laboratories. Photo is of sample received by the lab and may vary from final packaging. The results apply to the sample as received.