



Certificate of Analysis

CANNABUSINESS LABORATORIES, LLC

Customer:

Acela Biomedical LLC
700 Brush Creek Rd
Manchester, OH 45144

Sample ID **240125016**
Order Number **CB240125004**
Sample Name **25mg Soft Gel**

External Sample ID

Batch Number **20175**

Product Type **Other**

Sample Type **Other**

Received Date **1/25/2024**

COA Released **1/30/2024**

Comments

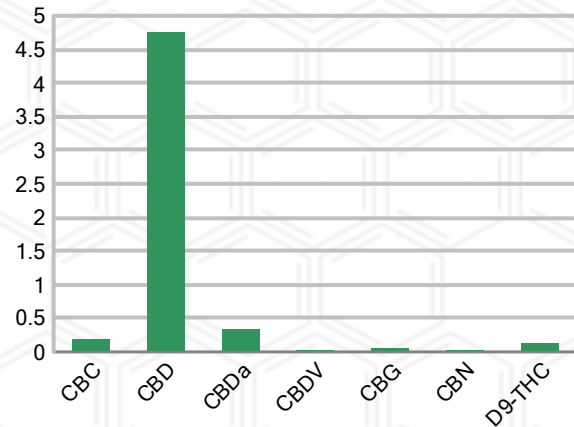
CANNABINOID PROFILE

Analyte	LOQ (%)	% Weight	mg/g
CBC	0.01	0.189	1.892
CBD	0.01	4.751	47.51
CBDa	0.01	0.334	3.344
CBDV	0.01	0.025	0.246
CBG	0.01	0.052	0.525
CBGa	0.01	ND	ND
CBN	0.01	0.019	0.194
d8-THC	0.01	ND	ND
d9-THC	0.01	0.132	1.319
THCa	0.01	ND	ND
Total Cannabinoids		5.503	55.03
Total Potential THC		0.132	1.319
Total Potential CBD		5.045	50.45
Total Potential CBG		0.052	0.525
Ratio of Total Potential CBD to Total Potential THC			38.22 : 1
Ratio of Total Potential CBG to Total Potential THC			0.39 : 1

SAMPLE IMAGE



CANNABINOIDS % Weight



*Total Cannabinoids refers to the sum of all cannabinoids detected.

*Total Potential CBD = (0.877 x CBDa) + CBD. *Total Potential THC = (0.877 x THCa) + THC. *Total Potential CBG = (0.877 x CBGa) + CBG.

*Total Potential THC/CBD are calculated to take into account the loss of an acid group during decarboxylation.



J. Hobgood
Laboratory Manager

SIGNATURE

Jamie Hobgood

LABORATORY MANAGER

01/30/2024 9:14 AM

DATE

This product has been tested by CannaBusiness Laboratories using validated testing methodologies and a quality system. Values reported relate only to the product tested. CannaBusiness Laboratories makes no claims as to the efficacy, safety, or other risks associated with any detected or non-detected levels of any compounds reported herein. This Certificate shall not be reproduced except in full, without the written permission of CannaBusiness Laboratories. Photo is of sample received by the lab and may vary from final packaging. The results apply to the sample as received.





Certificate of Analysis

CANNABUSINESS LABORATORIES, LLC

Customer

Acela Biomedical LLC
700 Brush Creek Rd
Manchester, OH 45144



Sample Name: 25mg Soft Gel

Sample ID: 240125016
Order Number: CB240125004
Product Type: Other
Sample Type: Other
Received Date: 01/25/2024
Batch Number: 20175

COA released: 01/30/2024 9:14 AM

Potency (mg/g)			
Date Tested: 01/29/2024		Method: CB-SOP-028	
Instrument:			
0.132 %	5.045 %	5.503 %	55.03 mg/g
Total THC	Total CBD	Total Cannabinoids	Total Cannabinoids

Analyte	Result	Units	LOQ	Result	Units
CBC (Cannabichromene)	0.189	%	0.010	1.892	mg/g
CBD (Cannabidiol)	4.751	%	0.010	47.51	mg/g
CBDa (Cannabidiolic Acid)	0.334	%	0.010	3.344	mg/g
CBDV (Cannabidivarin)	0.025	%	0.010	0.246	mg/g
CBG (Cannabigerol)	0.052	%	0.010	0.525	mg/g
CBGa (Cannabigerolic Acid)	ND	%	0.010	ND	mg/g
CBN (Cannabinol)	0.019	%	0.010	0.194	mg/g
D8-THC (D8-Tetrahydrocannabinol)	ND	%	0.010	ND	mg/g
D9-THC (D9-Tetrahydrocannabinol)	0.132	%	0.010	1.319	mg/g
THCa (Tetrahydrocannabinolic Acid)	ND	%	0.010	ND	mg/g



J. Hobgood
Laboratory Manager

Jamie Hobgood

01/30/2024 9:14 AM

SIGNATURE

DATE

NT = Not tested, ND = Not detected; LOQ = Limit of Quantitation; <LOQ = Detected; >ULOL = Above upper limit of linearity; CFU/g = Colony forming units per 1 gram; TNTC = Too numerous to count

This product has been tested by CannaBusiness Laboratories using validated testing methodologies and a quality system. Values reported relate only to the product tested. CannaBusiness Laboratories makes no claims as to the efficacy, safety, or other risks associated with any detected or non-detected levels of any compounds reported herein. This Certificate shall not be reproduced except in full, without the written permission of CannaBusiness Laboratories. Photo is of sample received by the lab and may vary from final packaging. The results apply to the sample as received.