



CannaBusiness Laboratories, LLC

2554 Palumbo Dr. Lexington, KY 40509

Certificate of Analysis

Customer:

Acela Biomedical LLC

1125 Progress Way

Maysville, KY 41056

Collected Date: **6/11/2020**

Received Date: **6/16/2020**

COA Released: **6/18/2020**

Comments:

Sample ID: **200615001**

Order Number: **CB200615001**

Sample Name: **Acela Capsule 25mg**

External Sample ID: **Acela Capsule 25mg**

Batch Number:

Product Type: **Edible**

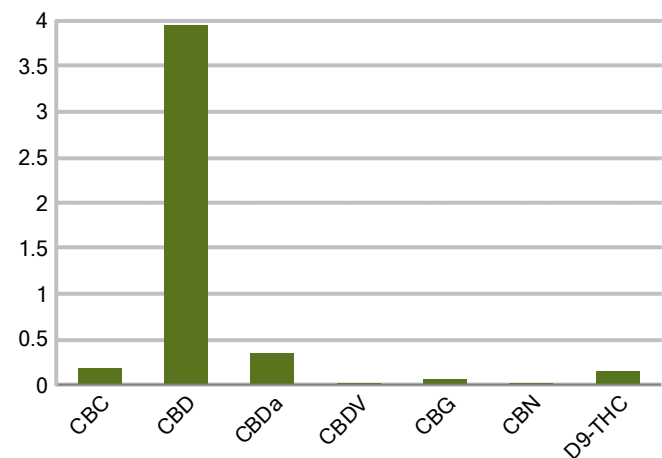
Sample Type: **Edible**

CANNABINOID PROFILE

Analyte	LOQ (%)	% weight	mg/g
CBC	0.01	0.179	1.790
CBD	0.01	3.948	39.48
CBDa	0.01	0.344	3.437
CBDV	0.01	0.021	0.209
CBG	0.01	0.059	0.592
CBGa	0.01	ND	ND
CBN	0.01	0.011	0.107
d8-THC	0.01	ND	ND
d9-THC	0.01	0.152	1.517
THCa	0.01	ND	ND
Total Cannabinoids		4.713	47.13
Total Potential THC		0.152	1.517
Total Potential CBD		4.250	42.50
Total Potential CBG		0.059	0.592



Cannabinoids (% weight)



Ratio of Total Potential CBD to Total Potential THC 27.96 : 1

Ratio of Total Potential CBG to Total Potential THC 0.39 : 1

*Total Cannabinoids refers to the sum of all cannabinoids detected.

*Total Potential CBD = (0.877 x CBDa) + CBD. *Total Potential THC = (0.877 x THCa) + THC. *Total Potential CBG = (0.877 x CBGa) + CBG.

*Total Potential THC/CBD are calculated to take into account the loss of an acid group during decarboxylation.



PJLA
Testing
Accreditation #109588

Authorized Signature

J. Hobgood
Laboratory Manager

Jamie Hobgood

06/18/2020 12:50 PM

DATE

This product has been tested by CannaBusiness Laboratories using validated testing methodologies and a quality system. Values reported relate only to the product tested. CannaBusiness Laboratories makes no claims as to the efficacy, safety, or other risks associated with any detected or non-detected levels of any compounds reported herein. This Certificate shall be reproduced except in full, without the written permission of CannaBusiness Laboratories. Uncertainty information is available on request. Photo is of sample received by the lab and may vary from final packaging. The results apply to the sample as received. ISO/IEC 17025:2017 Accredited.



CannaBusiness Laboratories, LLC

2554 Palumbo Dr. Lexington, KY 40509



Sample ID: 200615001
Sample Name: Acela Capsule 25mg
Sample Type: Edible

Certificate of Analysis

Customer

Acela Biomedical LLC
1125 Progress Way
Maysville, KY 41056



Overall Batch Results

PASS

Pesticide N/A	Moisture Content N/A
Potency PASS	Water Activity PASS
Mycotoxins N/A	Heavy Metals N/A
Microbial Screen N/A	Residual Solvents N/A
Terpenoids N/A	

Sample Name: Acela Capsule 25mg

Sample ID: 200615001

Product Type: Edible

Sample Type: Edible

Collected Date: 06/11/2020

Received Date: 06/16/2020

Batch Number:

Batch Size:

Sample Size:

COA released:

Potency (mg/g)

Date Tested: 06/16/2020

Method:

Instrument:

0.152 %	4.250 %	4.713 %	47.13 mg/g
Total THC	Total CBD	Total Cannabinoids	Total Cannabinoids

Analyte	Result	Units	LOQ	Result	Units
CBC (Cannabichromene)	0.179	%	0.010	1.790	mg/g
CBD (Cannabidiol)	3.948	%	0.010	39.48	mg/g
CBDa (Cannabidiolic Acid)	0.344	%	0.010	3.437	mg/g
CBDV (Cannabidivarin)	0.021	%	0.010	0.209	mg/g
CBG (Cannabigerol)	0.059	%	0.010	0.592	mg/g
CBGa (Cannabigerolic Acid)	ND	%	0.010	ND	mg/g
CBN (Cannabinol)	0.011	%	0.010	0.107	mg/g
D8-THC (D8-Tetrahydrocannabinol)	ND	%	0.010	ND	mg/g
D9-THC (D9-Tetrahydrocannabinol)	0.152	%	0.010	1.517	mg/g
THCa (Tetrahydrocannabinolic Acid)	ND	%	0.010	ND	mg/g

Water Activity

Date Tested: 06/16/2020

Result Units LOQ Result
0.299 Aw 0.030 Pass



Authorized Signature

Laboratory Manager

Jamie Hobgood

06/18/2020 12:50 PM

Date Time

NT = Not tested, ND = Not detected; LOQ = Limit of Quantitation; <LOQ = Detected; >ULOL = Above upper limit of linearity; CFU/g = Colony forming units per 1 gram; TNTC = Too numerous to count

CannaBusiness Laboratories
License # P-0059: (859)-514- 6999 <https://www.cannabusinesslabs.us>

This product has been tested by CannaBusiness Laboratories using validated testing methodologies and a quality system. Values reported relate only to the product tested. CannaBusiness Laboratories makes no claims as to the efficacy, safety, or other risks associated with any detected or non-detected levels of any compounds reported herein. This Certificate shall not be reproduced except in full, without the written permission of CannaBusiness Laboratories. Uncertainty information is available on request. Photo is of sample received by the lab and may vary from final packaging. The results apply to the sample as received. ISO/IEC 17025:2017 Accredited.