



CannaBusiness Laboratories, LLC

2554 Palumbo Dr. Lexington, KY 40509

Certificate of Analysis

Customer:

Acela Biomedical LLC

1125 Progress Way

Maysville, KY 41056

Collected Date: **9/30/2020**

Received Date: **10/7/2020**

COA Released: **10/8/2020**

Sample ID: **201005036**

Order Number: **CB201005014**

Sample Name: **Balm Potency 1 oz & .25 oz**

External Sample ID: **see comment section**

Batch Number: **20265**

Product Type: **Topical**

Sample Type: **Topical**

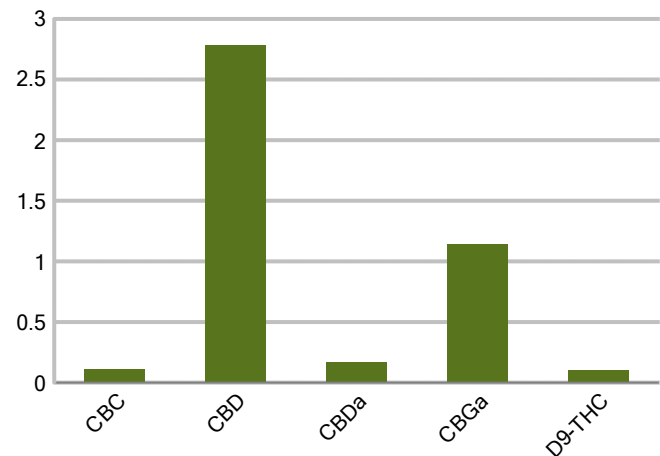
Comments: *External Sample ID: 1 oz and .25 oz Batch# 20265 Balm Potency Test*

CANNABINOID PROFILE

Analyte	LOQ (%)	% weight	mg/g
CBC	0.01	0.112	1.116
CBD	0.01	2.781	27.81
CBDa	0.01	0.171	1.714
CBDV	0.01	ND	ND
CBG	0.01	ND	ND
CBGa	0.01	1.141	11.41
CBN	0.01	ND	ND
d8-THC	0.01	ND	ND
d9-THC	0.01	0.104	1.040
THCa	0.01	ND	ND
Total Cannabinoids		4.310	43.10
Total Potential THC		0.104	1.040
Total Potential CBD		2.931	29.31
Total Potential CBG		1.002	10.02



Cannabinoids (% weight)



Ratio of Total Potential CBD to Total Potential THC 28.18 : 1

Ratio of Total Potential CBG to Total Potential THC 9.64 : 1

**Total Cannabinoids refers to the sum of all cannabinoids detected.*

**Total Potential CBD = (0.877 x CBDa) + CBD. *Total Potential THC = (0.877 x THCa) + THC. *Total Potential CBG = (0.877 x CBGa) + CBG.*

**Total Potential THC/CBD are calculated to take into account the loss of an acid group during decarboxylation.*



PJLA
Testing
Accreditation #109588

Authorized Signature

Laboratory Manager

Jamie Hobgood

10/08/2020 9:25 AM

DATE

This product has been tested by CannaBusiness Laboratories using validated testing methodologies and a quality system. Values reported relate only to the product tested. CannaBusiness Laboratories makes no claims as to the efficacy, safety, or other risks associated with any detected or non-detected levels of any compounds reported herein. This Certificate shall be reproduced except in full, without the written permission of CannaBusiness Laboratories. Uncertainty information is available on request. Photo is of sample received by the lab and may vary from final packaging. The results apply to the sample as received. ISO/IEC 17025:2017 Accredited.



CannaBusiness Laboratories, LLC

2554 Palumbo Dr. Lexington, KY 40509



Sample ID: 201005036
 Sample Name: Balm Potency 1 oz & .25 oz
 Sample Type: Topical

Certificate of Analysis

Customer

Acela Biomedical LLC
 1125 Progress Way
 Maysville, KY 41056



Overall Batch Results

Pesticide N/A	Moisture Content N/A
Potency PASS	Water Activity N/A
Mycotoxins N/A	Heavy Metals N/A
Microbial Screen N/A	Residual Solvents N/A
Terpenoids N/A	

Sample Name: Balm Potency 1 oz & .25 oz

Sample ID: 201005036

Product Type: Topical

Sample Type: Topical

Collected Date: 09/30/2020

Received Date: 10/07/2020

Batch Number: 20265

Batch Size: .25

Sample Size:

COA released: 10/08/2020 9:25 AM

Potency (mg/g)

Date Tested: 10/08/2020

Method:

Instrument:

0.104 %	2.931 %	4.310 %	43.10 mg/g
Total THC	Total CBD	Total Cannabinoids	Total Cannabinoids

Analyte	Result	Units	LOQ	Result	Units
CBC (Cannabichromene)	0.112	%	0.010	1.116	mg/g
CBD (Cannabidiol)	2.781	%	0.010	27.81	mg/g
CBDa (Cannabidiolic Acid)	0.171	%	0.010	1.714	mg/g
CBDV (Cannabidivarin)	ND	%	0.010	ND	mg/g
CBG (Cannabigerol)	ND	%	0.010	ND	mg/g
CBGa (Cannabigerolic Acid)	1.141	%	0.010	11.41	mg/g
CBN (Cannabinol)	ND	%	0.010	ND	mg/g
D8-THC (D8-Tetrahydrocannabinol)	ND	%	0.010	ND	mg/g
D9-THC (D9-Tetrahydrocannabinol)	0.104	%	0.010	1.040	mg/g
THCa (Tetrahydrocannabinolic Acid)	ND	%	0.010	ND	mg/g



Authorized Signature

Jamie Hobgood
 Laboratory Manager

Jamie Hobgood

10/08/2020 9:25 AM

Date Time

NT = Not tested, ND = Not detected; LOQ = Limit of Quantitation; <LOQ = Detected; >ULOL = Above upper limit of linearity; CFU/g = Colony forming units per 1 gram; TNTC = Too numerous to count

CannaBusiness Laboratories
 License # P-0059: (859)-514- 6999 <https://www.cannabusinesslabs.us>

This product has been tested by CannaBusiness Laboratories using validated testing methodologies and a quality system. Values reported relate only to the product tested. CannaBusiness Laboratories makes no claims as to the efficacy, safety, or other risks associated with any detected or non-detected levels of any compounds reported herein. This Certificate shall not be reproduced except in full, without the written permission of CannaBusiness Laboratories. Uncertainty information is available on request. Photo is of sample received by the lab and may vary from final packaging. The results apply to the sample as received. ISO/IEC 17025:2017 Accredited.