



CannaBusiness Laboratories, LLC

2554 Palumbo Dr. Lexington, KY 40509

Certificate of Analysis

Customer:

Acela Biomedical LLC

1125 Progress Way

Maysville, KY 41056

Collected Date:

Received Date: **12/15/2020**

COA Released: **12/16/2020**

Comments:

Sample ID: **201215002**

Order Number: **CB201215001**

Sample Name: **Bacon Tincture**

External Sample ID:

Batch Number:

Product Type: **Concentrate**

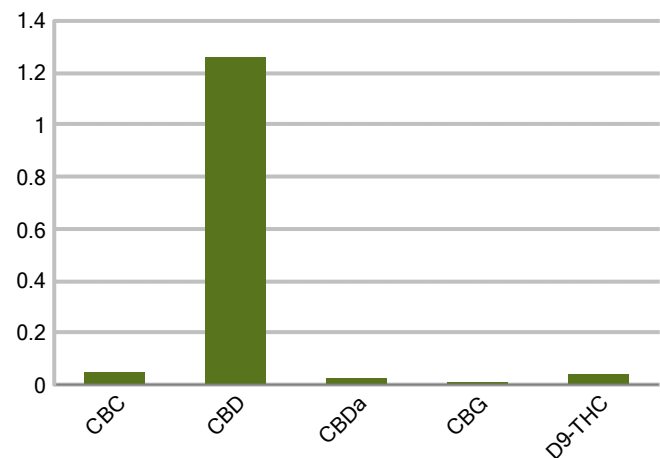
Sample Type: **Concentrate**

CANNABINOID PROFILE

Analyte	LOQ (%)	% weight	mg/g
CBC	0.01	0.048	0.475
CBD	0.01	1.261	12.61
CBDa	0.01	0.026	0.257
CBDV	0.01	ND	ND
CBG	0.01	0.011	0.108
CBGa	0.01	ND	ND
CBN	0.01	ND	ND
d8-THC	0.01	ND	ND
d9-THC	0.01	0.041	0.405
THCa	0.01	ND	ND
Total Cannabinoids		1.385	13.85
Total Potential THC		0.041	0.405
Total Potential CBD		1.283	12.83
Total Potential CBG		0.011	0.108



Cannabinoids (% weight)



Ratio of Total Potential CBD to Total Potential THC 31.29 : 1

Ratio of Total Potential CBG to Total Potential THC 0.27 : 1

**Total Cannabinoids refers to the sum of all cannabinoids detected.*

**Total Potential CBD = (0.877 x CBDa) + CBD. *Total Potential THC = (0.877 x THCa) + THC. *Total Potential CBG = (0.877 x CBGa) + CBG.*

**Total Potential THC/CBD are calculated to take into account the loss of an acid group during decarboxylation.*



PJLA
Testing
Accreditation #109588

Authorized Signature

J. Hobgood
Laboratory Manager

Jamie Hobgood

12/16/2020 8:56 AM

DATE

This product has been tested by CannaBusiness Laboratories using validated testing methodologies and a quality system. Values reported relate only to the product tested. CannaBusiness Laboratories makes no claims as to the efficacy, safety, or other risks associated with any detected or non-detected levels of any compounds reported herein. This Certificate shall be reproduced except in full, without the written permission of CannaBusiness Laboratories. Uncertainty information is available on request. Photo is of sample received by the lab and may vary from final packaging. The results apply to the sample as received. ISO/IEC 17025:2017 Accredited.



CannaBusiness Laboratories, LLC

2554 Palumbo Dr. Lexington, KY 40509



Sample ID: 201215002
Sample Name: Bacon Tincture
Sample Type: Concentrate

Certificate of Analysis

Customer

Acela Biomedical LLC
1125 Progress Way
Maysville, KY 41056



Overall Batch Results

Pesticide N/A	Moisture Content N/A
Potency PASS	Water Activity N/A
Mycotoxins N/A	Heavy Metals N/A
Microbial Screen N/A	Residual Solvents N/A
Terpenoids N/A	

Sample Name: Bacon Tincture

Sample ID: 201215002

Product Type: Concentrate

Sample Type: Concentrate

Collected Date:

Received Date: 12/15/2020

Batch Number:

Batch Size:

Sample Size:

COA released: 12/16/2020 8:56 AM

Potency (mg/g)

Date Tested: 12/15/2020

Method:

Instrument:

0.041 %	1.283 %	1.385 %	13.85 mg/g
Total THC	Total CBD	Total Cannabinoids	Total Cannabinoids

Analyte	Result	Units	LOQ	Result	Units
CBC (Cannabichromene)	0.048	%	0.010	0.475	mg/g
CBD (Cannabidiol)	1.261	%	0.010	12.61	mg/g
CBDa (Cannabidiolic Acid)	0.026	%	0.010	0.257	mg/g
CBDV (Cannabidivarin)	ND	%	0.010	ND	mg/g
CBG (Cannabigerol)	0.011	%	0.010	0.108	mg/g
CBGa (Cannabigerolic Acid)	ND	%	0.010	ND	mg/g
CBN (Cannabinol)	ND	%	0.010	ND	mg/g
D8-THC (D8-Tetrahydrocannabinol)	ND	%	0.010	ND	mg/g
D9-THC (D9-Tetrahydrocannabinol)	0.041	%	0.010	0.405	mg/g
THCa (Tetrahydrocannabinolic Acid)	ND	%	0.010	ND	mg/g



Authorized Signature

Jamie Hobgood
Laboratory Manager

Jamie Hobgood

12/16/2020 8:56 AM

Date Time

NT = Not tested, ND = Not detected; LOQ = Limit of Quantitation; <LOQ = Detected; >ULOL = Above upper limit of linearity; CFU/g = Colony forming units per 1 gram; TNTC = Too numerous to count

CannaBusiness Laboratories
License # P-0059: (859)-514- 6999 <https://www.cannabusinesslabs.us>

This product has been tested by CannaBusiness Laboratories using validated testing methodologies and a quality system. Values reported relate only to the product tested. CannaBusiness Laboratories makes no claims as to the efficacy, safety, or other risks associated with any detected or non-detected levels of any compounds reported herein. This Certificate shall not be reproduced except in full, without the written permission of CannaBusiness Laboratories. Uncertainty information is available on request. Photo is of sample received by the lab and may vary from final packaging. The results apply to the sample as received. ISO/IEC 17025:2017 Accredited.